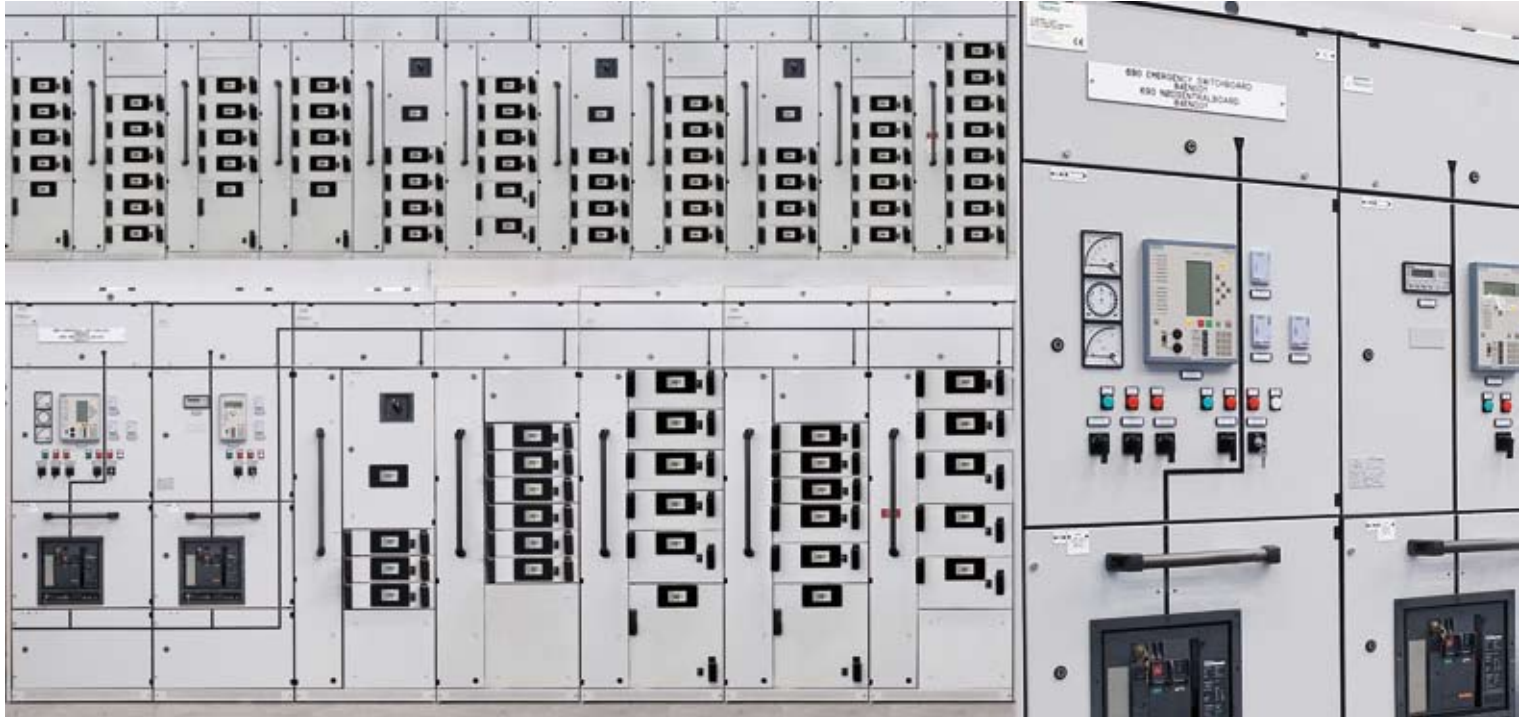


MOPUSTOR YME RE-DEVELOPMENT / NORWAY



In Charge of Your Energy.

MOPUSTOR YME RE-DEVELOPMENT / NORWAY



The project consists of the development of a production unit for the Yme Project. The Yme field is located in the Egersund basin in the North Sea, approximately 110 km offshore in the Norwegian Continental Shelf.

The Yme field consists of two main reservoirs, Beta and Gamma, which are approximately 12 km apart. The Yme Re-development Project is based on a MOPUstor, which is a Mobile Offshore Production Unit with a subsea storage tank. The MOPUstor will be located at the Gamma reservoir with surface completion of the Gamma wells and tie back of the completed subsea Beta wells.

EPC CONTRACTOR

SBM-GUSTOMSC

END USER

TALISMAN ENERGY NORGE AS

SOLUTIONS DELIVERED

Skema supply included 2 Power Motor Control Centers switchboards, specifically:

- Power Centers (11 columns)
- Motor Control Centers (51 columns, 283 drawers)

“Skema’s performance in terms of the delivery of hardware and the submission of documents was excellent. Particularly in relation to the close-out of the final documentation (Manufacturing Record Books and Technical Operating and Maintenance Manuals), Skema was an example to other suppliers. We would like to take this opportunity to thank Skema for all their efforts in ensuring a successful close-out of the purchase order.”

Project Expeditors



